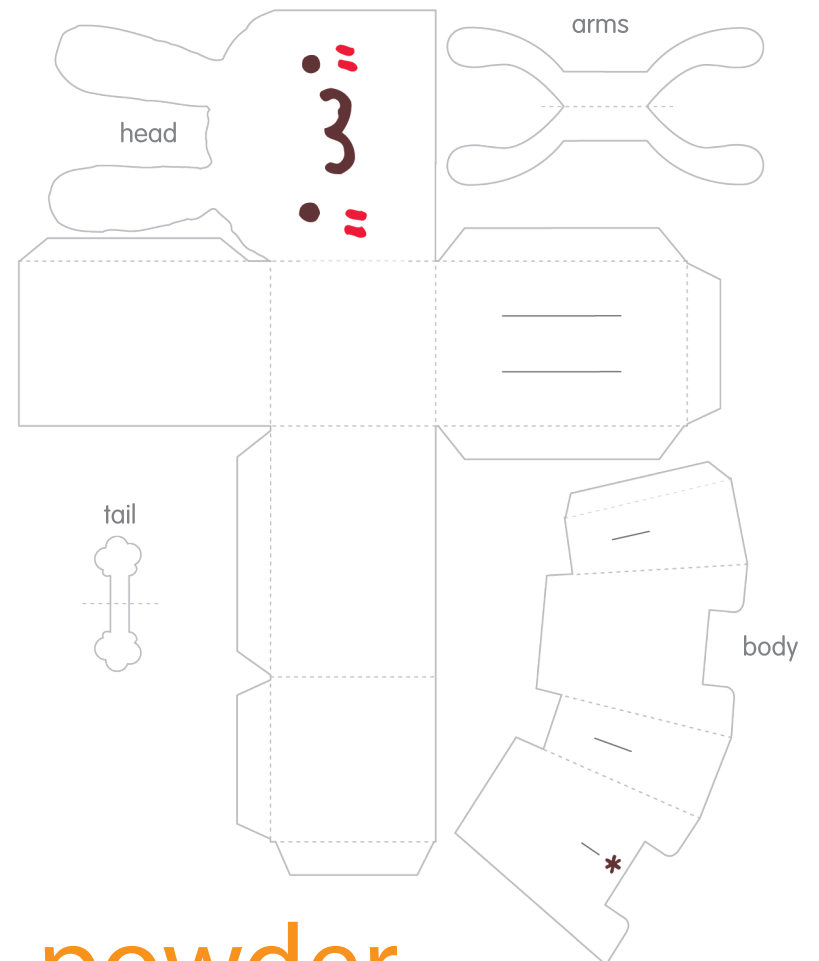
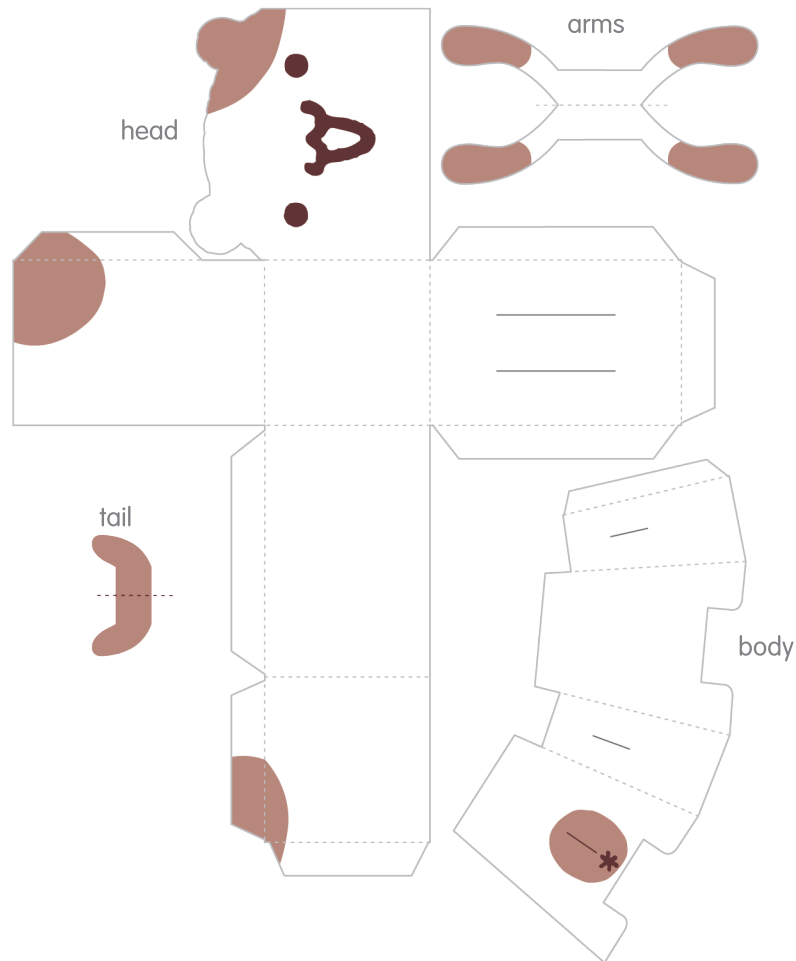


# Purin™ paper friend

1. Cut out solid lines.
2. Fold on dashed lines.
3. Fasten arms & tail to themselves using glue or tape.
4. Insert arms & tail into body.
5. Make head starting with back using glue or tape on tabs. Attach face panel last.
6. Attach body to base of head.
7. Slide ears behind face. Fasten using glue or tape.
8. Display proudly!

## muffin



## powder